



imaging all the women

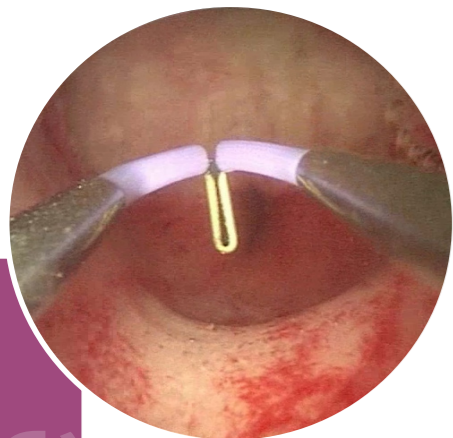


NEW

ReseCare

Two models of
6mm resectoscopes
respecting all the women





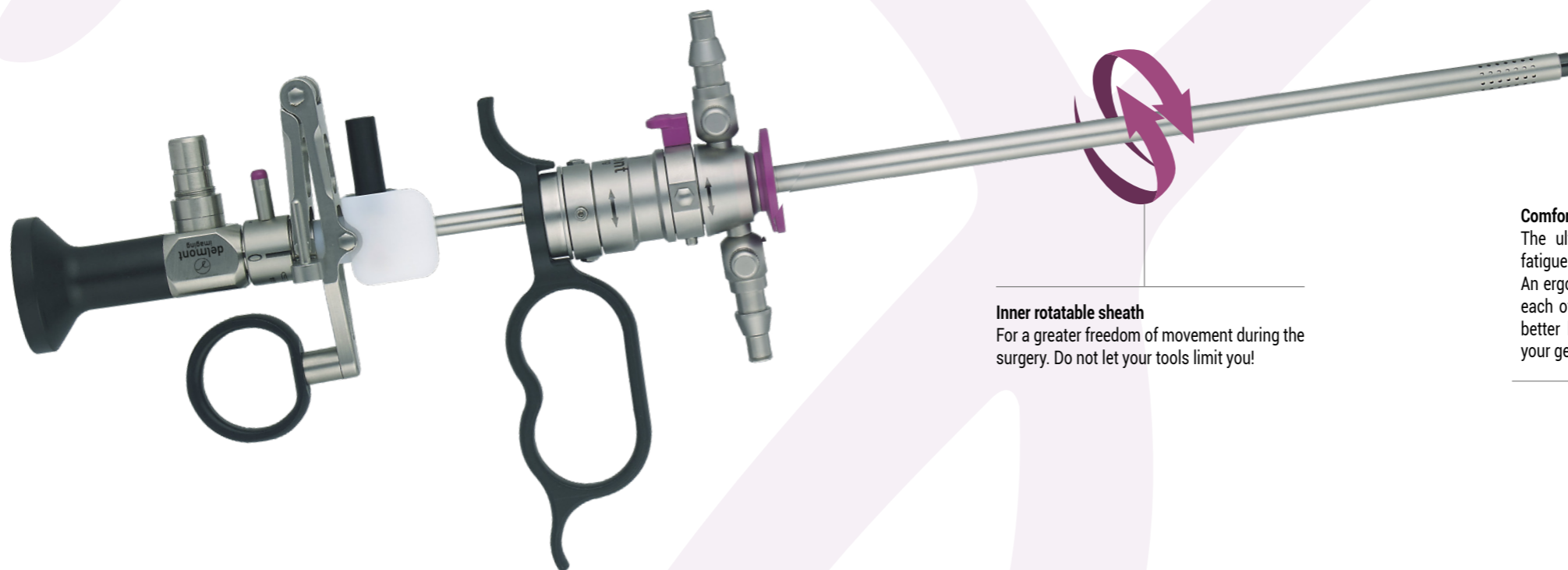
A 18.5Fr. only resectoscope

Small, but efficient!

The advantages of this small diameter are various, both for the surgeon and the patient. With **ReseCare**, your surgical gesture is precise but also faster since the stages of dilation are less numerous. The chips being small, their presence is less penalizing for your vision and your comfort of work.

ReseCare respects your patients. The insertion resistance is naturally reduced and the use facilitated, even for menopausal women or with a stenotic cervical canal. As a result, the volume of fluid absorbed by the patient is less and confirmed by a systematic input/output balance.

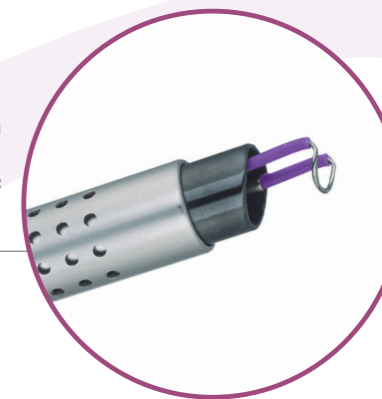
"After three years of continuous use, we can't get enough of ReseCare! It is faster, simpler and less traumatic."
Prof. Hervé Fernandez, Head of the Department of OB/GYN of the Kremlin Bicêtre Hospital. France.



Inner rotatable sheath
 For a greater freedom of movement during the surgery. Do not let your tools limit you!

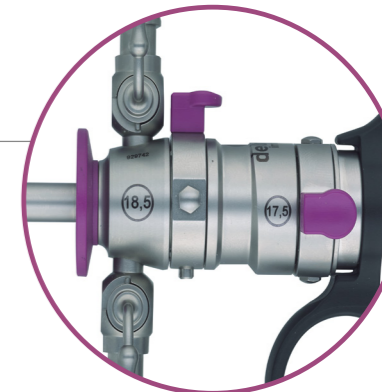
Quality to the last detail

A good image also results from a controlled and performing «suction-irrigation» couple. The black ceramic eliminates all reflections.



Quick lock

The end of difficult lockings.



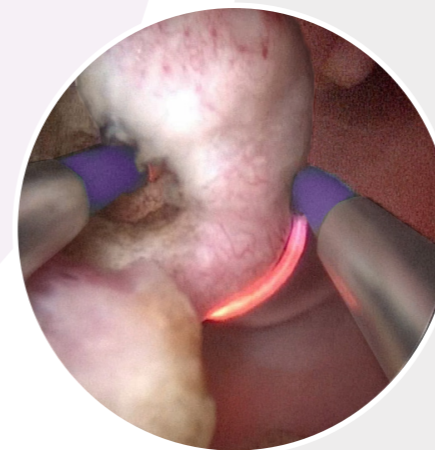
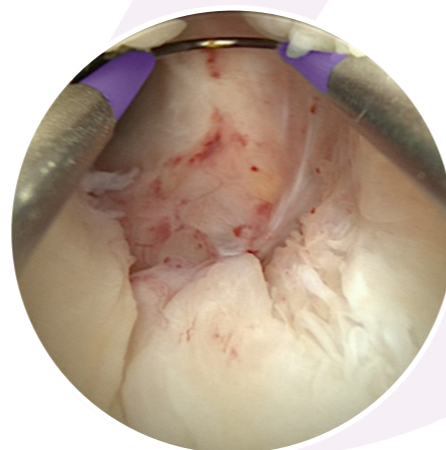
Comfort and precision guaranteed

The ultra-light PEEK handle avoids fatigue during the surgery. An ergonomic position is provided for each of your fingers. You will have a better hold of the resectoscope and your gesture will be more accurate.



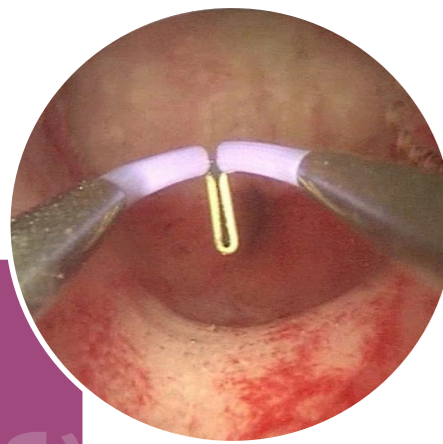
HD Hysteroscope: unmatched performances and outstanding durability

Our latest generation of lenses, designed to take full advantage of HD, provides detailed and perfectly clear images even in the backgrounds. This hyper resolution together with a real homogeneous light distribution provides a huge depth of field. The whole image will be sharp! Our HD hysteroscope is of course autoclavable. Its three separate tubes design makes it resistant, durable but also easily repairable in case of accident.



Bipolar resection

The advantages of this now widely used technology are twofold. First, the electric current no longer passes through the patient but directly returns to the generator through the resectoscope itself, reducing the risk of burns and synechiae. But also and above all, a monopolar resectoscope has to use glycocole whose absorption by the patient is source of ionic disorders. In contrast, a bipolar resectoscope uses a saline solution which is not toxic, and moreover less expensive. Connected to a bipolar generator, **ReseCare** offers you this extra serenity. It is nevertheless **compatible** and works perfectly with all monopolar generators.



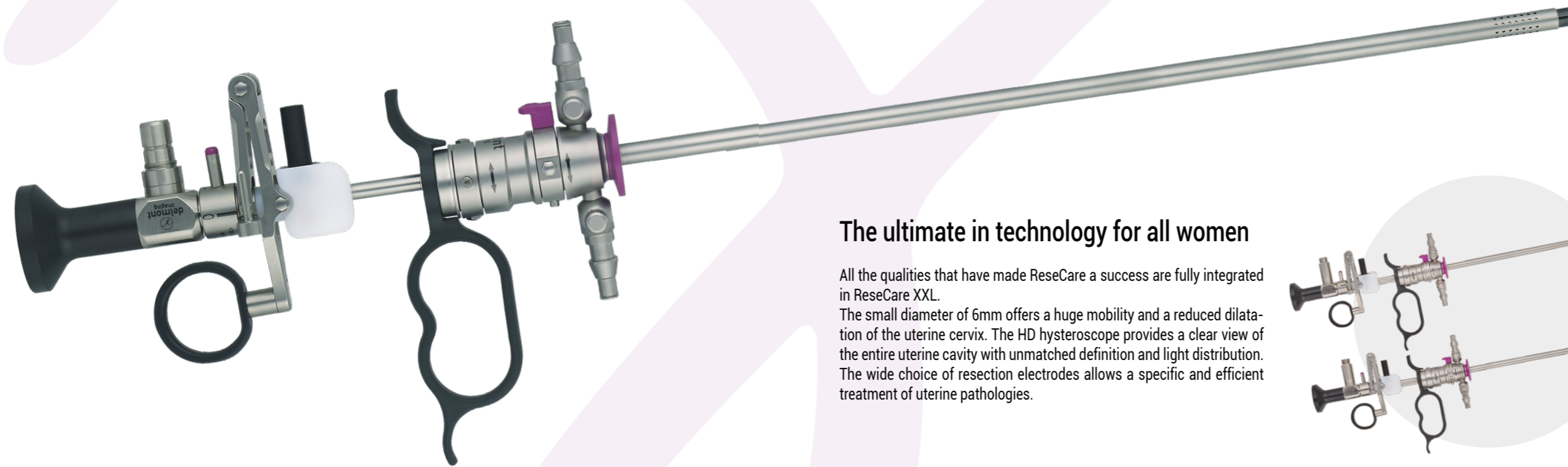
A 18.5Fr. only resectoscope

Small, but efficient!

The advantages of this small diameter are various, both for the surgeon and the patient. With **ReseCare**, your surgical gesture is precise but also faster since the stages of dilation are less numerous. The chips being small, their presence is less penalizing for your vision and your comfort of work.

ReseCare respects your patients. The insertion resistance is naturally reduced and the use facilitated, even for menopausal women or with a stenotic cervical canal. As a result, the volume of fluid absorbed by the patient is less and confirmed by a systematic input/output balance.

"After three years of continuous use, we can't get enough of ReseCare! It is faster, simpler and less traumatic."
Prof. Hervé Fernandez, Head of the Department of OB/GYN of the Kremlin Bicêtre Hospital. France.



10
cm

ReseCare XXL

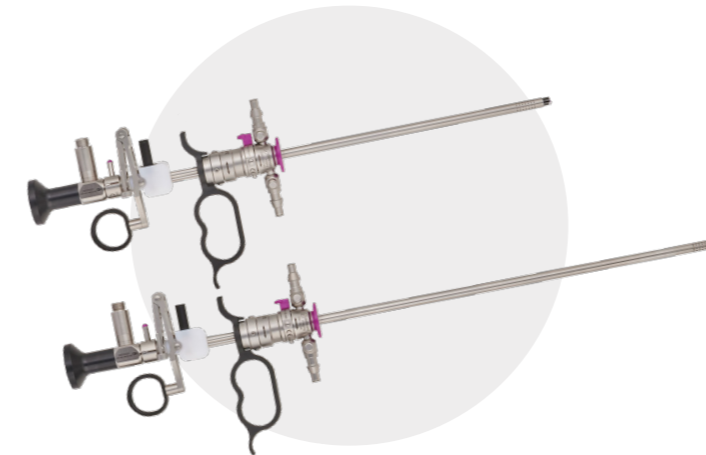
The latest but not the least model of the range!

It is the length that differentiates ReseCare XXL from ReseCare, and that will allow you to treat your patients with a large uterus or who are overweight limiting the use close to the cervix. Unique on the market, its 287mm working length allows an effortless access to all uterine cavities, including the ostia edges and fundal region, where a standard resectoscope would fail.

This new product is the perfect solution that takes into consideration the singularities of all women without compromising the surgeon's comfort. It fits a current need of all health centers for specialized equipment, which will tend to increase in the future.

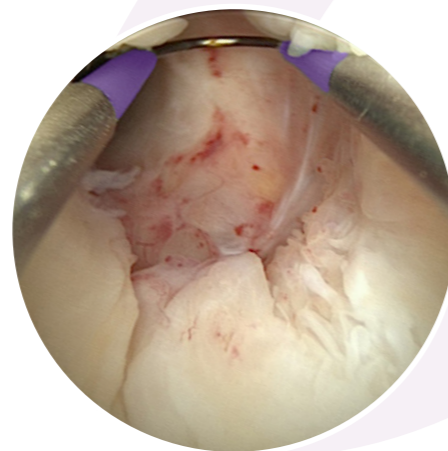
The ultimate in technology for all women

All the qualities that have made ReseCare a success are fully integrated in ReseCare XXL. The small diameter of 6mm offers a huge mobility and a reduced dilatation of the uterine cervix. The HD hysteroscope provides a clear view of the entire uterine cavity with unmatched definition and light distribution. The wide choice of resection electrodes allows a specific and efficient treatment of uterine pathologies.



HD Hysteroscope: unmatched performances and outstanding durability

Our latest generation of lenses, designed to take full advantage of HD, provides detailed and perfectly clear images even in the backgrounds. This hyper resolution together with a real homogeneous light distribution provides a huge depth of field. The whole image will be sharp! Our HD hysteroscope is of course autoclavable. Its three separate tubes design makes it resistant, durable but also easily repairable in case of accident.



A diagnostic set also available in XXL version

Just like ReseCare, the XXL diagnostic set provides better visibility of large or difficult-to-reach uterine cavities. Benefit from the same high definition image quality for an easier diagnosis. Both diagnostic and operative, the length and diameter of our new XXL products can match the needs of your patients.



NEW

ReseCare XXL references and features:

HD Hysteroscope, 2.9mm, 12°
 Autoclavable, L: 395mm
 Ref. D300 100 087








Outer sheath, 18.5Fr.
 XXL version. Double flow. Quick lock.
 Ref. D300 130 088



Inner sheath, 17.5Fr.
 XXL version. Rotatable
 Ref. D300 130 089



Reusable electrodes:

Description	Reference
 Cutting loop, 30° - XXL	D300 140 086
 Cutting loop, straight - XXL	D300 140 087
 Knife electrode - XXL	D300 140 088
 Rollerball electrode - XXL	D300 140 089
 Vaporization electrode, rollerball with tips - XXL	D300 140 122

Accessories:

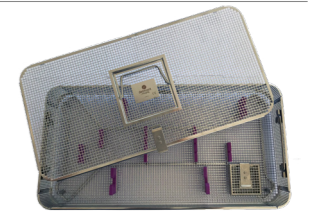
Obturator
 XXL version. Quick lock
 Ref. D300 130 091



Sterilization tube
 Autoclaving and storage of XXL electrodes
 Ref. D200 160 034



ReseCare sterilization basket
 Autoclavable. 540x240x70mm. With personalized silicone holders
 Ref. D200 160 519



Diagnostic set:

HD Hysteroscope, 2.9mm, 30°
 Autoclavable, L: 395mm
 Ref. D300 100 088



Graduated diagnostic sheath, 4mm
 XXL version. Rotatable irrigation stopcock
 Ref. D300 110 072



Sterilization basket for two instruments
 XXL version. 480x150x50mm. With personalized silicone holders
 Ref. D200 160 520



ReseCare references and features:

HD Hysteroscope, 2.9mm, 12°

Autoclavable, L: 300mm

Ref. D300 100 004



Outer sheath, 18.5Fr.

Double flow. Quick lock.

Ref. D300 130 000



Inner sheath, 17.5Fr.

Rotatable

Ref. D300 130 001



Passive working element

Compatible monopolar & bipolar

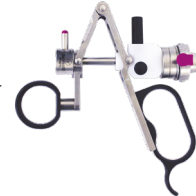
Ref. D300 130 002



Active working element

Compatible monopolar & bipolar

Ref. D300 130 009








Light cable

Autoclavable, Ø: 3.5mm, L : 2.3m, supplied with Storz connectors

Ref. D200 150 500



Electrodes:

Description	Reference	
	Sterile, single use (Delivery in boxes of 10)	Reusable (Delivery in boxes of 4)
 Cutting loop, 30°	D300 140 067	D300 140 000
 Cutting loop, straight	D300 140 068	D300 140 001
 Knife electrode	D300 140 069	D300 140 002
 Rollerball electrode	D300 140 070	D300 140 003
 Vaporization electrode, rollerball with tips	D300 140 091	D300 140 090

NEW

Accessories:

Obturator

Quick lock

Ref. D300 130 003



Sterilization tube

Autoclaving and storage of electrodes

Ref. D200 160 003



ReseCare sterilization basket

Autoclavable. 480x240x70mm. With personalized silicone holders

Ref. D200 160 504



Erbe bipolar resection cable

VIO300D & VIO3

Ref. D200 190 001

Covidien bipolar resection cable

ForceTriad

Ref. D200 190 000